

# UpgradeDownload User Guide

---

Version: 1.0.5

DocCode: SW-BASE-UG-0001

Date: April 21, 2011



[www.spreadtrum.com](http://www.spreadtrum.com)

## Important Notice

---

### Copyright Notice

Copyright © 2007, Spreadtrum Communications, Inc. All rights reserved.

### Trademarks

Spreadtrum Communications, Inc. and Spreadtrum Communications, Inc.'s products are exclusively owned by Spreadtrum Communications, Inc. References to other companies and their products use trademarks owned by the respective companies and are for reference purpose only.

### Warranty Disclaimer

Spreadtrum Communications, Inc. makes no representations or warranties, either expressed or implied, by or with respect to anything in this document, and shall not be liable for any implied warranties of merchantability or fitness for a particular purpose or for any indirect, special or consequential damages.

### Confidentiality

The information contained herein (including any attachments) is confidential. The recipient hereby acknowledges the confidentiality of this document, and except for specific purposes, this document shall not be disclosed to any third party.

# About This Document

---

## Purpose

The UpgradeDownload User Guide describes the functions and how to use UpgradeDownload .

## Intended Audience

This document is intended for:

- UpgradeDownload development engineer

## Organization

This document consists of three chapters and is organized as follows.

Chapter	Describes
1 Introduction	Functions, file composition, and running requirements of SPUgrade.
2 Interface Description	The elements on the main interface, toolbar, and dialog box.
3 Operation Guide	How to use UpgradeDownload.

# Contents

---

<b>1 Introduction.....</b>	<b>1-2</b>
1.1 Functions .....	1-2
1.2 File Composition .....	1-2
1.3 Running Requirements .....	1-3
<b>2 Interface Description.....</b>	<b>2-4</b>
2.1 Main Interface .....	2-4
2.2 Toolbar .....	2-4
2.3 Status Area .....	2-5
2.4 Download Settings Dialog Box .....	2-6
<b>3 Operation Guide .....</b>	<b>3-8</b>
3.1 Quick Start Guide.....	3-8
3.1.1 Running.....	3-8
3.1.2 Opening Packets and Configuring Files.....	3-8
3.1.3 Setting Parameters .....	3-8
3.1.4 Starting Downloading .....	3-8
3.1.5 Downloading Complete .....	3-8
3.1.6 Exiting the Program .....	3-9
3.2 Common Settings .....	3-9
3.2.1 Configuring Serial Port .....	3-9
3.2.2 Multi-Language Tab Page .....	3-10
3.2.3 LCD-Configure Tab Page .....	3-10
3.2.4 MCP Type Page.....	3-11
3.3 Password Settings.....	3-12

## Figures

---

<b>Figure 2-1</b> Main interface.....	2-4
<b>Figure 2-2</b> Status area.....	2-5
<b>Figure 2-3</b> Passed .....	2-6
<b>Figure 2-4</b> Failed .....	2-6
<b>Figure 2-5</b> Waiting.....	2-6
<b>Figure 2-6</b> Download Settings dialog box .....	2-7
<b>Figure 3-1</b> Download progress .....	3-8
<b>Figure 3-2</b> Passed .....	3-9
<b>Figure 3-3</b> Failed .....	3-9
<b>Figure 3-4</b> Configuring the serial port.....	3-9
<b>Figure 3-5</b> Multi-language tab page .....	3-10
<b>Figure 3-6</b> LCD-Configure tab page .....	3-10
<b>Figure 3-7</b> MCP Type tab page.....	3-12
<b>Figure 3-8</b> Password Dialog .....	3-13
<b>Figure 3-9</b> Reset password Dialog .....	3-13



# Tables

---

**Table 1-1** File composition ..... 1-2

**Table 2-1** UpgradeDownload toolbar icons ..... 2-4

**Table 2-2** Status area elements..... 2-5

**Table 2-3** Download Settings dialog box elements..... 2-7

# 1 Introduction

## 1.1 Functions

UpgradeDownload is used to write the mobile software into hardware modules through serial ports. It only supports packet file. It has the following advantages:

- High efficiency  
Multiple modules can perform downloading at the same.
- Easy operation  
You need only to connect the module to the serial port and switch to the correct mode. The program automatically detects the files and starts downloading. After downloading, you can manually change to another module and downloading starts again.

## 1.2 File Composition

UpgradeDownload consists of the files described in Table 1-1.

**Table 1-1** File composition

Type	File
*.exe	UpgradeDownload.exe
*.dll	BMAFrame.dll
	BMPlatform.dll
	Channel.dll
	DiagChan.dll
Configuration file	UpgradeDownload.ini
	BMFileType.ini
	BMError.ini
	BMTIMEOUT.ini
	BMAConfig.xml
	Channel.ini
	DiagChan.ini
	MCPTYPE.ini



## 1.3 Running Requirements

UpgradeDownload runs on Windows 2000. At least one usable serial port is required.

# 2 Interface Description




## 2.1 Main Interface



Figure 2-1 Main interface



## 2.2 Toolbar

Table 2-1 UpgradeDownload toolbar icons

Icon	Description
	Select the packet file to be downloaded. This icon is unavailable during downloading and turns available after downloading.
	Set download parameters. This icon is unavailable during downloading and turns available after downloading.
	Detect and open the usable serial port and prepare for downloading. <ul style="list-style-type: none"> <li>Automatic: The program automatically detects the modules connected to the serial port and starts downloading if it finds such modules. After downloading, the program starts detecting again.</li> <li>Manual: The program reports the download result after downloading is complete. Downloading starts again after you click this icon again.</li> </ul> This icon is unavailable the first time you run the program and you can

	start downloading after configuration.
	<p>Stop downloading. This icon is available when user clicks the Start icon and the usable serial port is open.</p> <p>To protect NV file downloading, this icon turns unavailable. In other cases, user can click this icon to stop downloading.</p> <p>Only after downloading is stopped can you exit the program.</p>
	Version information

## 2.3 Status Area

**Figure 2-2** Status area

Port	Step	Status	Progress	Time[s]
1	FDL	Checking baudrate	Waiting...	0

**Table 2-2** Status area elements

Element	Description
Port	Serial port number X indicates that the serial port cannot be open.
Step	File name
Status	Current operation status
Progress	<p>Downloading progress</p> <ul style="list-style-type: none"> <li>• <b>Waiting</b> indicates no module is detected.</li> <li>• <b>Inprogress</b> indicates an operation is being performed.</li> <li>• <b>Passed</b> indicates downloading is complete. If an error occurs, the column turns red and <b>Failed</b> is displayed.</li> </ul>
Time(s)	Cost time (second), each download

**Figure 2-3** Passed

Port	Step	Status	Progress
8	NV	Finish	Passed

**Figure 2-4** Failed

Port	Step	Status	Progress
8	NV	Finish	Failed

**Figure 2-5** Waiting


Port	Step	Status	Progress
1	FDL	Checking baudrate	Waiting...

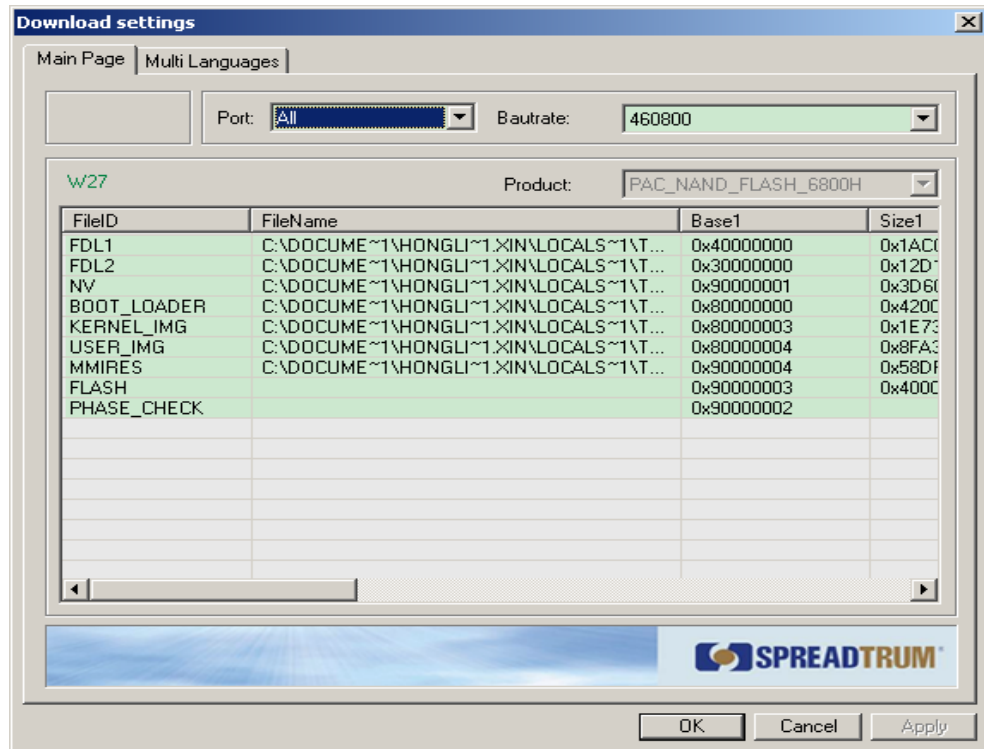
**Note:**

After downloading starts, if **Waiting...** is displayed, it indicates that an operation is being performed and that this operation may take some time.

In automatic mode, if the previous operation fails, the messages for the next operation are in red.

## 2.4 Download Settings Dialog Box

Click . The **Download Settings** dialog box is displayed, as shown in Figure 2-6.

**Figure 2-6** Download Settings dialog box**Table 2-3** Download Settings dialog box elements

Element	Description
Port drop-down list box	Serial port
Baudrate drop-down list box	Baud rate
1003	Production version number
Select Product drop-down list box	Product to be downloaded
Downloading area	<b>FileName</b> , can not edit. <b>Base</b> indicates the download address. <b>Size</b> indicates the file size. <b>Empty</b> indicates that the file size is automatically calculated during downloading.

# 3 Operation Guide

## 3.1 Quick Start Guide


### 3.1.1 Running

Run **UpgradeDownload.exe**. The main interface is displayed, as shown in Figure 2-1.


### 3.1.2 Opening Packets and Configuring Files

Click  to open packets to be downloaded and configure files if necessary.

### 3.1.3 Setting Parameters

Click . The **Download Settings** dialog box is displayed as shown in Figure 2-6.

### 3.1.4 Starting Downloading

Click . The program automatically starts detecting usable serial ports and opens these ports for downloading. See Figure 3-1.

**Figure 3-1** Download progress

Port	Step	Status	Progress
8	UserImg	Downloading...	<div><div></div></div>

**Note:**

If the module is connected to the serial port but downloading is still not started, infer that:

- The module is not powered.
- The serial port is being used by another program and therefore DloaderR cannot open it. To solve the problem, quit the program that is using the serial port.
- The module is not in boot mode. Only when the module is in boot mode can downloading be started.

For details about how to switch to boot mode, refer to relevant documents.

### 3.1.5 Downloading Complete

Figure 3-2 shows that downloading is complete.

**Figure 3-2** Passed


Port	Step	Status	Progress
8	NV	Finish	Passed

Figure 3-3 shows that downloading fails. The failure causes are given.


**Figure 3-3** Failed

Port	Step	Status	Progress
8	NV	Finish	Failed

In automatic mode, the downloading result is displayed for 10 seconds and then the main interface is displayed.

In manual mode, unless you click , the downloading result is always displayed.

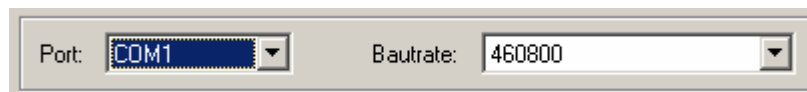
## 3.1.6 Exiting the Program

Click  to exit the program.

## 3.2 Common Settings

### 3.2.1 Configuring Serial Port

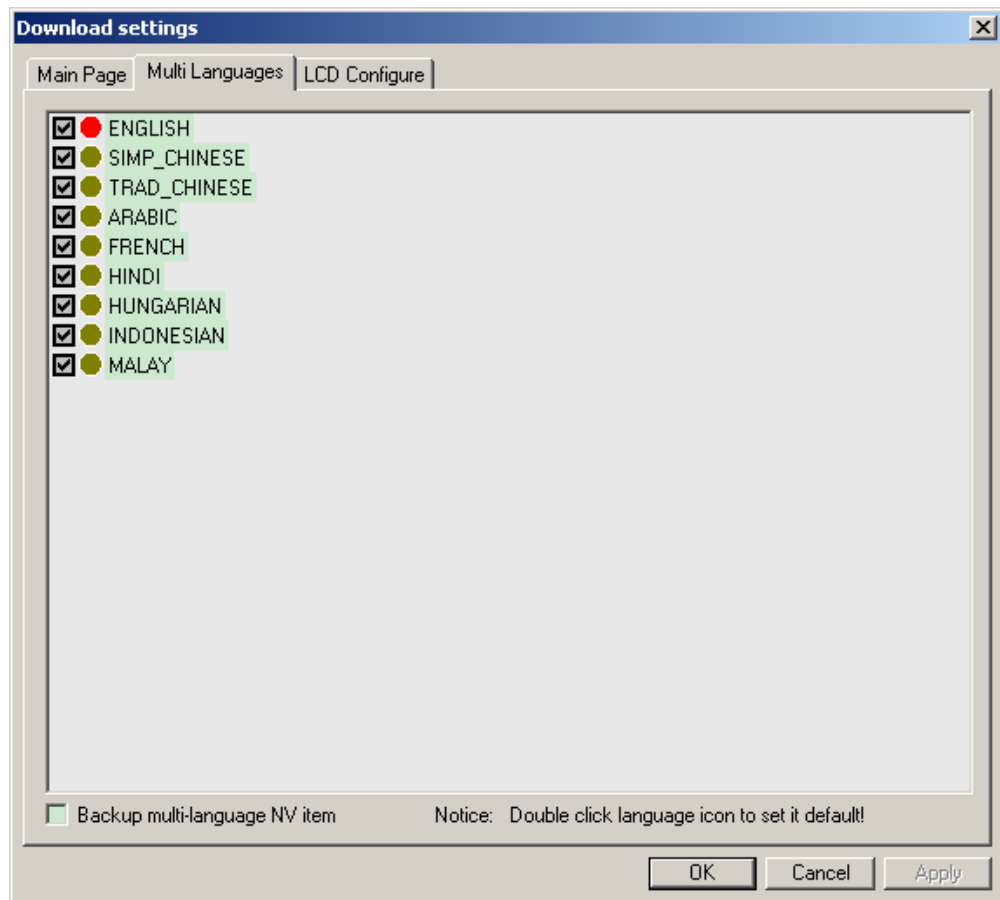
Select the serial port in the **Port** drop-down list box as shown in Figure 3-4.

**Figure 3-4** Configuring the serial portA screenshot of a configuration window with a light gray border. It contains two settings: 'Port' and 'Baudrate'. The 'Port' label is to the left of a blue drop-down menu showing 'COM1'. The 'Baudrate' label is to the left of a white text box containing '460800' and a small drop-down arrow on the right.



The baud rate can be 57600, 115200, 230400, 60800, and 921600. The default value is 115200. If you select a wrong baud rate, you cannot open the serial port or download files.

## 3.2.2 Multi-Language Tab Page

Figure 3-5 Multi-language tab page



It is used to set the supported languages in NV file specially. You can double click the icon ball to set default language.

Element	Description
<input checked="" type="checkbox"/>  ENGLISH	Red-ball is default language
<input checked="" type="checkbox"/>  SIMP_CHINESE	Normal supported language
<input type="checkbox"/> Backup multi-language NV item	Select to backup the multi-language NV item or not

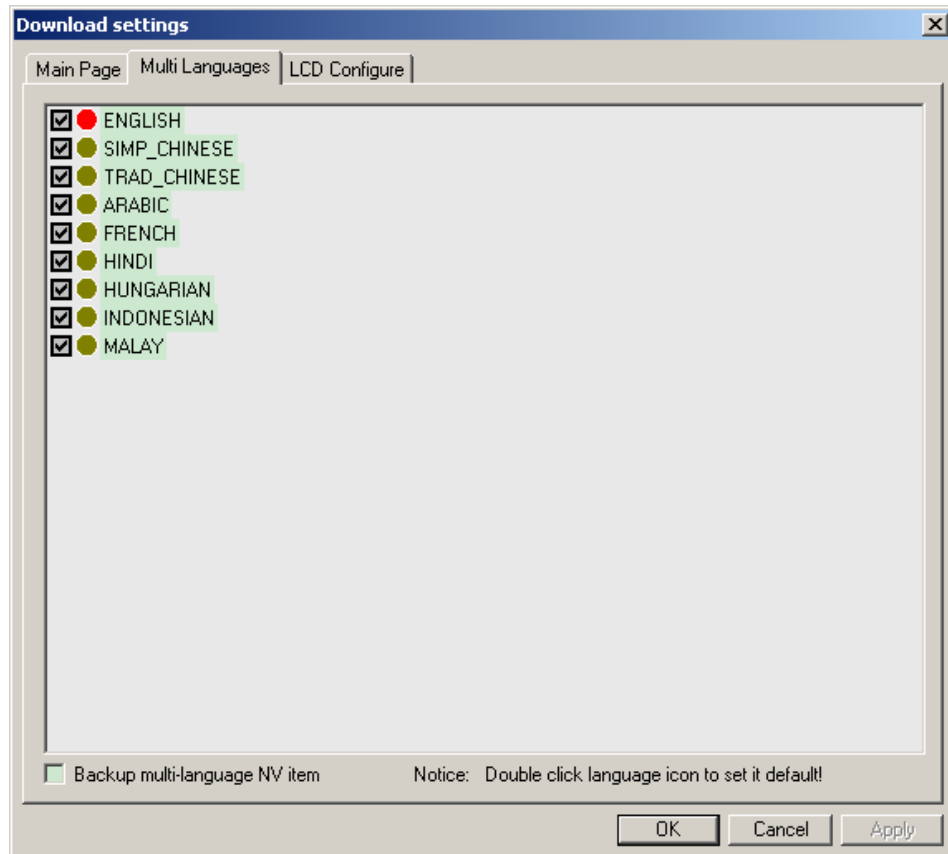
**Note:**

If the NV file is not set or included supported language information, this page will be empty.

## 3.2.3 LCD-Configure Tab Page

Figure 3-6 LCD-Configure tab page





It is used to set the supported LCD in PS or UserImg file specially.

**Note:**

If the PS or UserImg file is not set or included LCD information, this page will be empty.

### 3.2.4 MCP Type Page

This page is not showed as default. If you want to use this function, please modify the UpgradeDownload.ini.

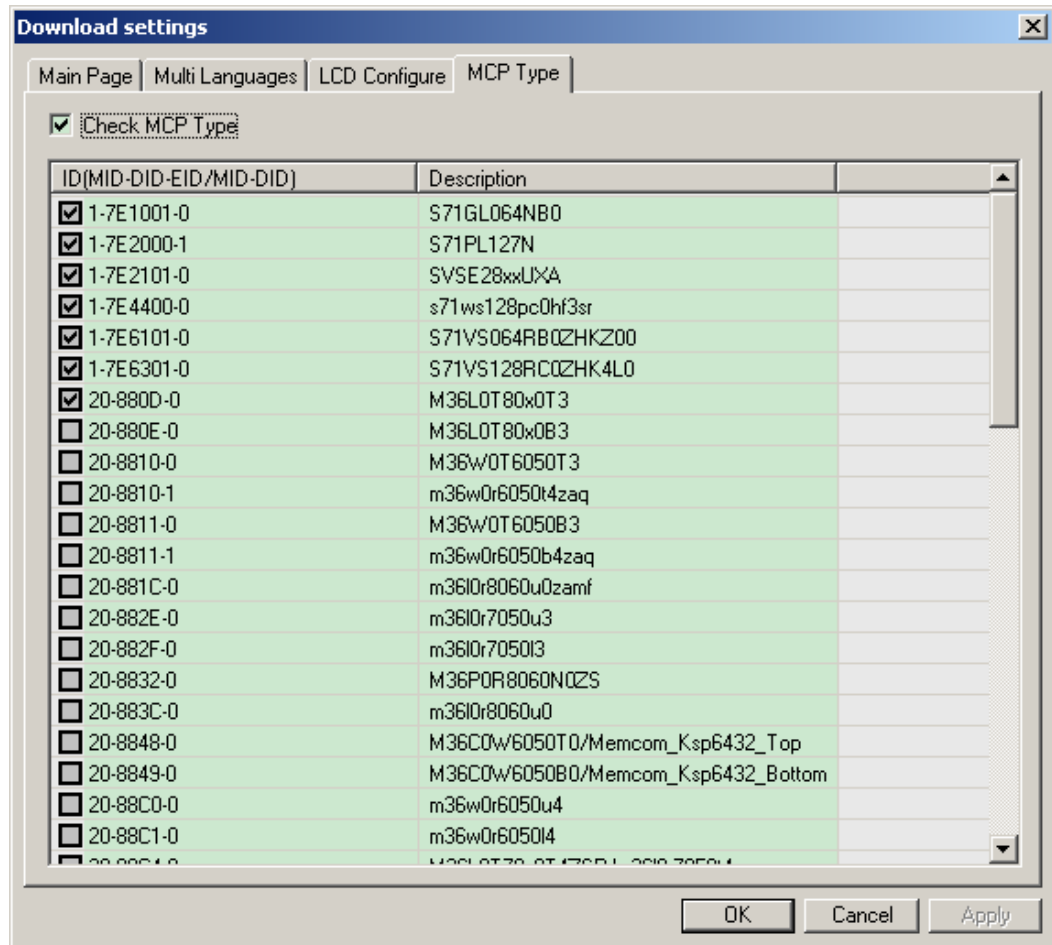
[GUI]

ShowMcpTypePage=1

After modified and restart tool. The MCP Type tab page is showed as Figure 3-7, “Check MCP Type” is not checked as default. After check it, you can select the MCP type range in the list of MCP Types. In the download process (after FDL1/FDL2), the tool will check the MCP Type, if the MCP Type in the phone, the tool will stop and report the error.

You add MCP Type in the file MCPTType.ini.

Figure 3-7 MCP Type tab page



### 3.3 Password Settings

Modify the file FactoryDownload.ini

[GUI]

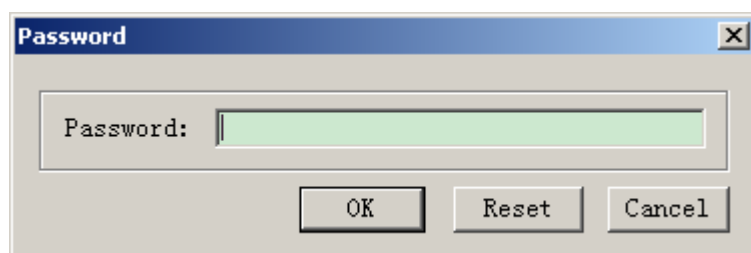
NeedPassword=1

After modified, restart the tool. You will need input password when you click the button



or , the password dialog like Figure 3-8. The default password is “admin”. You can reset the password when clicking the “Reset” button, then the dialog like Figure 3-9. The password must be character (a-z, A-Z) or number (0-9), and the length must be no more than 20.

**Figure 3-8** Password Dialog



**Figure 3-9** Reset password Dialog

