



At first , You need to make updating card at first (like Boot disk) .

Pls notice : below operation must be in **Windows xp** OS computer .

Pls unzip Winhex .ara and android .ara files , and pls copy unzippend

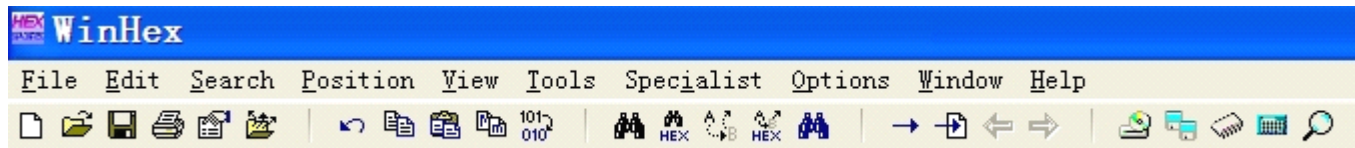
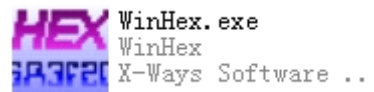
Winhex and android  android  WinHex and



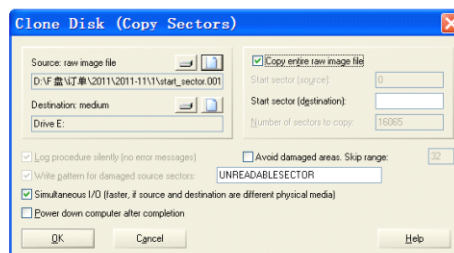
start_sector.001


three files to your computer (must Windows xp computer) ,
and also insert your TF card (no others things) into your computer .

1. pls open WinHex and find WinHex .exe



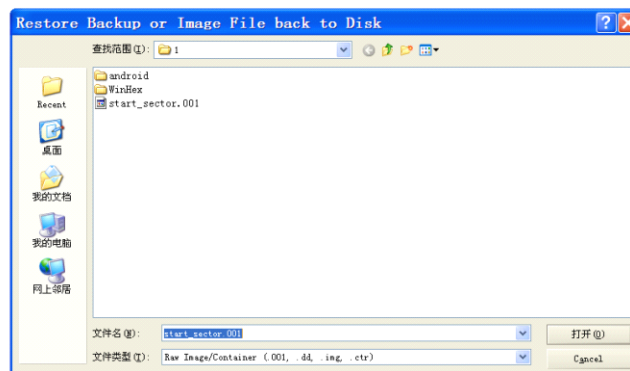
2. Pls choose Tools—Disk Tools ---Clone Disk ---Ok




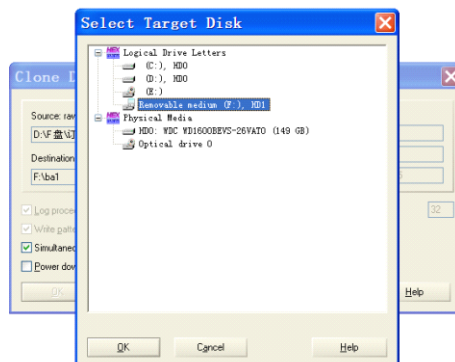
3. In the “**Source :raw image file**” line Pls click **second button**  ,



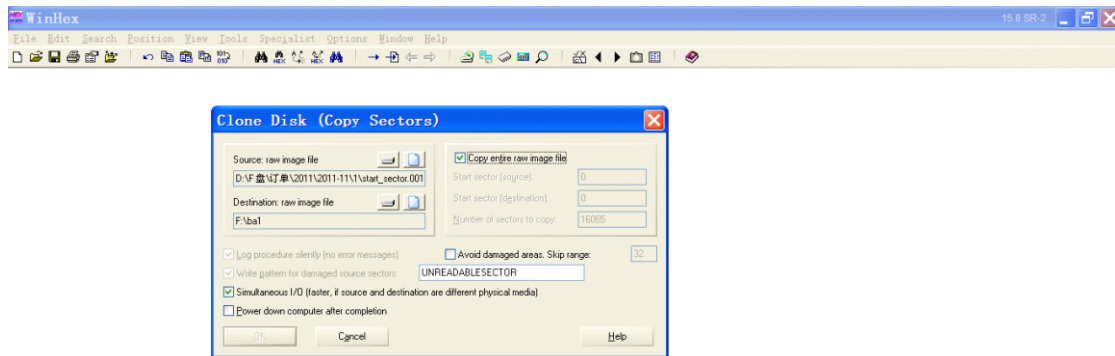
choose file



4. In” **Destination :raw image file**” line ,pls click **first button**  and choose **your TF card (which you insert into your computer)** . and finally pls click ok .

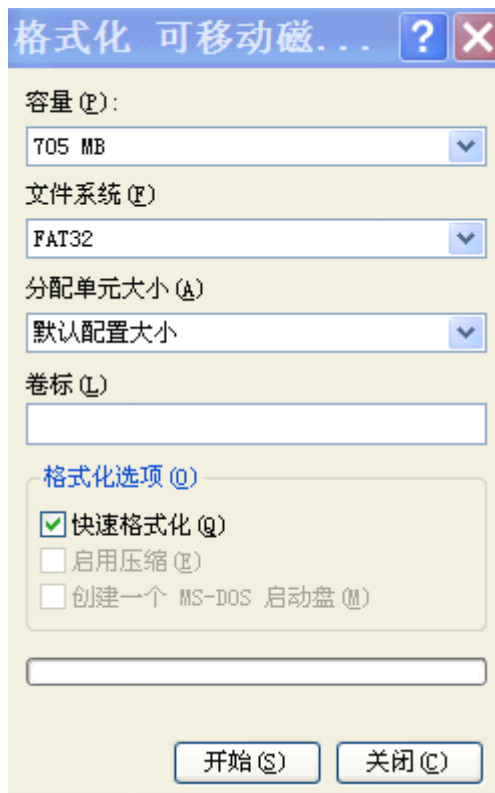


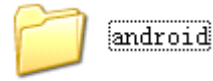
5. pls fill “0” in the “ **Start sector (destination)** : the pls click “ OK “



6. After ok , next a notice will come out , pls also click ok ,and start to make boot disk , afer finish , take off TF card , and insert the TF card into computer again (should remember , you must take off TF card at first , then insert the TF card into computer again) .

7. Pls right click TF card , and choose to FAT32 Format the TF card (pls choose quickly format) , must be quickly format . Finally ,pls choose start . This time the capacity of TF card will reduce to about 704MB





8 . After finishing formatting , pls copy “ android “ file _____ (I sent to you) to the root directory of TF card (TF card is our just finished TF card) .

9. Pls insert TF card to tablet pc(this time tablet pc should turn off) , after you turn on tablet pc , the tablet pc will update itself . After finish updating , pls take off TF card , the tablet pc will re-start , then updating is ok .

9. After tablet pc re-start , finishing updating , you need to update the logo . Pls turn off the tablet pc again . Pls delete others files except of **“logo.bin”** in



‘ android “ file _____ in the TF card . Pls insert TF card (with**“logo.bin”** ‘)into tablet pc again , pls turn on tablet pc again . The tablet pc will read and save your logo , after finish it , pls take off the TF card ,, the updating will be finished .